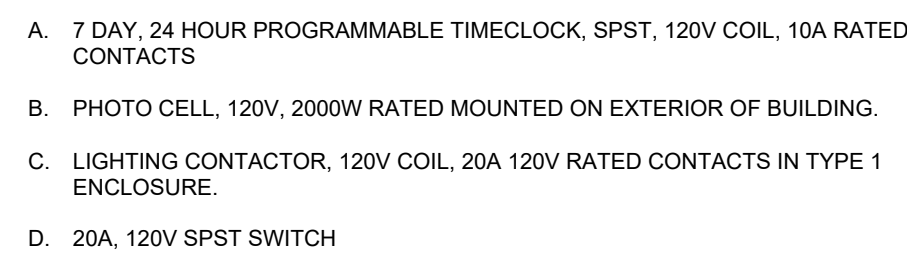
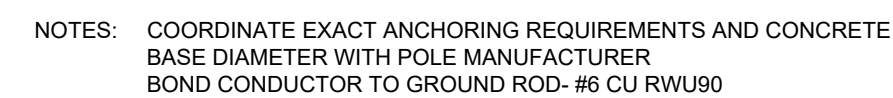


1. PROVIDE (3) 3/4"-10" PUMP CLAD BUILDING GROUND RODS LOCATED 10' APART. COMPLETE WITH #3/0 INSULATED COPPER WIRE TO NEW ELECTRICAL SERVICE ENTRANCE GROUND BUS IN THE BUILDING ELECTRICAL ROOM. INSTALLATION TO COMPLY WITH OESC SECTIONS 10-100 TO 10-118 WHERE APPLICABLE.
2. PROVIDE CONNECTION AND INSTALLATION OF SEPTIC PUMP AND CONTROL PANEL PROVIDED BY CIVIL CONSULTANT. CONNECTIONS TO BE FED FROM PANEL 2M. COORDINATE AND PROVIDE ALL CONNECTIONS AND REQUIREMENTS WITH FINAL EQUIPMENT SPECIFICATIONS AND CIVIL DRAWINGS. COORDINATE EXACT LOCATIONS AND REQUIREMENTS PRIOR TO ROUGH IN.

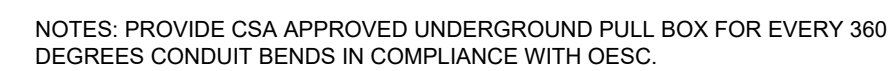
NOTES:
- PROVIDE ALL NECESSARY MOUNTING HARDWARE FOR A COMPLETE INSTALLATION.



SCALE: NTS

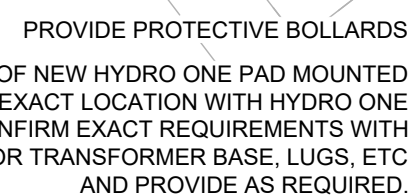
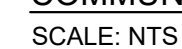


SCALE: NTS



SCALE: NTS

SCALE: 1:300



SCALE: NTS



SCALE: NTS

HFI QUALITY AND
INNOVATION LAB

3322 HANDS ROAD, R.R. #4,
PRESCOTT, ON K0E 1T0

CE-6074

ELECTRICAL SITE PLAN

E2 OF 9

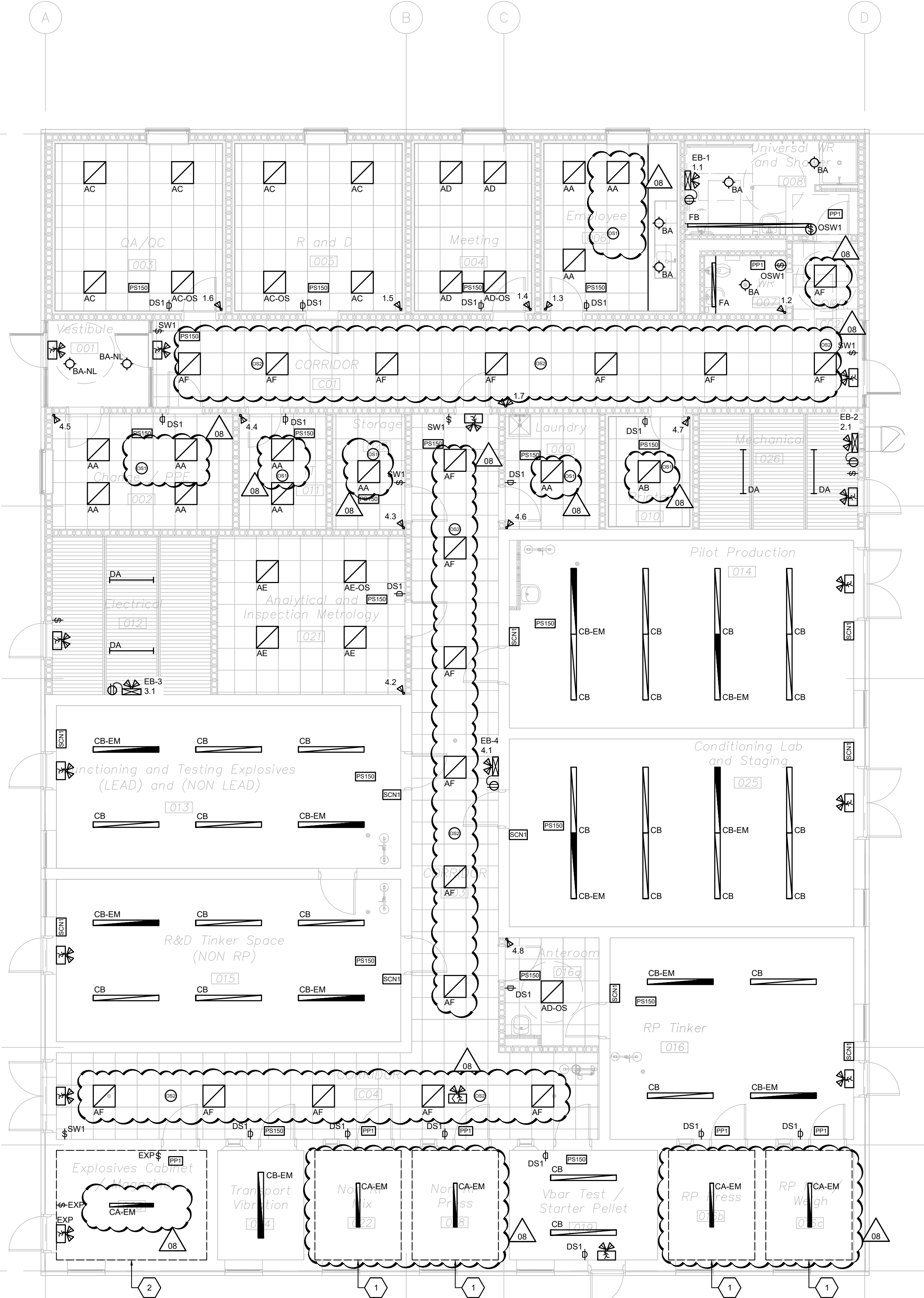
Interior Lighting Power and Control Schedule									
Space Name, Zoning and Size			Power	Manual Ctrl	Dimming	Automatic Ctrl		Detail	
Room # / Sub Zone #	Space Name / Zone Description	Area Ft ² M ²	Area Max SB10 Watts	Manual Control Type(s)	Dimming Control Type	"ON" Ctrl Level	"OFF" Ctrl - +Sub Level	Day light Control	Lighting control detail(s)
001	Vestibule	73.0	6.78	48	N/A	N/A	N/A	N/A	N/A
002	Change/ PPE	173.0	16.07	74	DS1	continuous	OS-70%	V5	N/A
003, 005	QA/QC, R&D	249.0	23.13	231	DS1	continuous	OS-70%	V5	N/A
004	Meeting	177.0	16.44	189	DS1	continuous	OS-70%	V5	N/A
006	Employee	200.0	18.58	124	DS1	continuous	OS-70%	V5	N/A
007	WR	39.2	3.64	33	OSW1	N/A	OS	V5	N/A
008	Universal WR	135.1	12.55	114	OSW1	N/A	OS	V5	N/A
009	Laundry	90.0	8.36	38	DS1	continuous	OS-70%	V5	N/A
010	Printer	83.0	7.71	46	DS1	continuous	OS-70%	V5	N/A
011	IT	83.0	7.71	110	DS1	continuous	MAN	V5	N/A
012	Electrical	209.0	19.42	89	SW	N/A	N/A	N/A	N/A
013	Functioning & Testing	467.0	43.39	677	SCN1	continuous	N/A	N/A	N/A
014	Pilot Production	539.0	50.07	781	SCN1	continuous	N/A	N/A	N/A
015	R&D Tinker Space	467.0	43.39	677	SCN1	continuous	N/A	N/A	N/A
016	RP Tinker	409.0	38.00	593	SCN1	continuous	N/A	N/A	N/A
016a	Anteroom	81.0	7.53	117	DS1	continuous	OS-70%	V5	N/A
016b, 016c	RP Press, RP Mix/ Weigh	79.0	7.34	114	DS1	continuous	N/A	N/A	N/A
018	Non RP Press	79.0	7.34	114	DS1	continuous	N/A	N/A	N/A
019	Vbar Test/ Starter Pellet	135.0	12.54	196	DS1	continuous	N/A	N/A	N/A
021	Analytical & Inspection	247.0	22.95	358	DS1	continuous	OS-70%	V5	N/A
022	Non RP Mix	79.0	7.34	114	DS1	continuous	N/A	N/A	N/A
024	Transport Vibration	79.0	7.34	114	DS1	continuous	N/A	N/A	N/A
025	Conditioning Lab & Staging	539.0	50.07	781	SCN1	continuous	N/A	N/A	N/A
026	Mechanical	152.0	14.12	65	SW	N/A	N/A	N/A	N/A
027	Storage	69.0	6.41	44	SW1	N/A	MAN	V5	N/A
028	Explosives Cabinet	137.0	12.73	199	SW	N/A	N/A	N/A	N/A
C01, C02	Corridor	555.0	51.56	366	SW1	N/A	OS	V5	N/A
C03, C04	Corridor	853.0	79.25	563	SW1	N/A	OS	V5	N/A

INTERIOR LIGHTING FIXTURE SCHEDULE				
FIXTURE TAG	DESCRIPTION AND MODEL SERIES	INPUT	LIGHT SOURCE	MOUNTING
AA	2X2 RECESSED FLAT LED PANEL, NLIGHT AIR ENABLED C/W 0-10V DIMMING. AXIS: SKYPEOL SERIES OR APPROVED EQUAL	120V 24.8W	LED 2400L 3500K 80CRI	RECESSED T-BAR
AB	2X2 RECESSED FLAT LED PANEL, NLIGHT AIR ENABLED C/W 0-10V DIMMING. AXIS: SKYPEOL SERIES OR APPROVED EQUAL	120V 12.2W	LED 4000L 3500K 80CRI	RECESSED T-BAR
AC	2X2 RECESSED HIGH EFFICIENCY FLAT LED PANEL, NLIGHT AIR ENABLED C/W 0-10V DIMMING AND BUILT IN DUAL TECH OCCUPANCY SENSOR WHERE INDICATED.	120V 44.6W	LED 4800L 3500K 80CRI	RECESSED T-BAR
AD	2X2 RECESSED HIGH EFFICIENCY FLAT LED PANEL, NLIGHT AIR ENABLED C/W 0-10V DIMMING AND BUILT IN DUAL TECH OCCUPANCY SENSOR WHERE INDICATED.	120V 31.7W	LED 4000L 3500K 80CRI	RECESSED T-BAR
AE	2X2 RECESSED FLAT LED PANEL, NLIGHT AIR ENABLED C/W 0-10V DIMMING AND BUILT IN DUAL TECH OCCUPANCY SENSOR WHERE INDICATED.	120V 54.1W	LED 6000L 3500K 80CRI	RECESSED T-BAR
AF	2X2 RECESSED FLAT LED PANEL, NLIGHT AIR ENABLED C/W 0-10V DIMMING, 0.5" STEP LENS. AXIS: SKYPEOL SERIES OR APPROVED EQUAL	120V 34.7W	LED 3200L 3500K 80CRI	RECESSED T-BAR
BA	WET LOCATION LISTED LED DOWNLIGHT C/W SQUARE TRIM MATTE WHITE FINISH LUMENPULSE: LUMENCORE RECESSED NANO DOWNLIGHT SERIES OR APPROVED EQUAL	120V 13.0W	LED 1300L 3500K 80CRI	RECESSED
CA-EM	4" HIGH EFFICIENCY INDUSTRIAL LED STRIP LIGHT, EXPLOSION PROOF, CLASS II DIV. 1 HAZARDOUS LOCATION RATED, WET LOCATION LISTED C/W 0-10V DIMMING, CLEAR LENS, 60 DEGREE BEAM ANGLE AND BUILT IN EMERGENCY BATTERY HOLOPHANE: HEXSEM OR APPROVED EQUAL	120V 80W	LED 9560L 4000K 80CRI	SURFACE MOUNTED
CB	6" LONG HIGH EFFICIENCY PENDANT LED LINEAR LIGHT, C/W NLIGHT AIR ENABLED, 0-10V DIMMING, DIFFUSED LENS, AND 10W EMERGENCY BACKUP BATTERY WHERE INDICATED 'EM'	120V 12W/FT	LED 1400L/FT 4000K 80CRI	SUSPENDED AT 9' A.F.F.
CB-EM	MARK ARCHITECTURAL: SLOT 4 OR APPROVED EQUAL			
DA	48" LED STRIP LIGHT C/W LUMEN SELECTABLE OPTION AND DIFFUSE LENS LITHONIA: CSS OR APPROVED EQUAL	120V 34.2W	LED 4000L 3500K 80CRI	SURFACE MOUNTED
FA	4" LED LINEAR RECESSED LIGHT C/W DAMP LOCATION LISTED. ALCON LIGHTING: 12100-20-R SERIES OR APPROVED EQUAL	120V 4.5W/FT	LED 640L/FT 3500K 80CRI	RECESSED
FB	10" LED LINEAR RECESSED LIGHT C/W DAMP LOCATION LISTED. ALCON LIGHTING: 12100-20-R SERIES OR APPROVED EQUAL	120V 4.5W/FT	LED 640L/FT 3500K 80CRI	RECESSED
NOTES: - PROVIDE ALL NECESSARY MOUNTING HARDWARE FOR A COMPLETE INSTALLATION. - COORDINATE WITH ARCHITECTURAL CEILING PLAN TO CONFIRM CEILING MATERIAL AND MOUNTING TYPE.				

EMERGENCY LIGHTING SCHEDULE						
UNIT	MANUFACTURER	DESCRIPTION	MODEL NO.	WATTAGE	VOLTAGE	# OF HEADS TIME
	LUMACELL	EMERGENCY BATTERY PACK WITH EMERGENCY LIGHTING HEADS	RGS SERIES	72	120VAC/12VDC	2 30
	LUMACELL	EXIT SIGN AND EMERGENCY LIGHTING COMBO PACK	LAC SERIES	80	120VAC/12VDC	2 30
	LUMACELL	SELF POWERED EXIT SIGN	LA SERIES	1.5	120VAC/12VDC	- 30
	LUMACELL	REMOTE EMERGENCY LIGHTING HEADS	MQM SERIES	5 / 10	12VDC	1 / 2 30
	LUMACELL	EXPLOSION PROOF- EXIT SIGN AND EMERGENCY LIGHTING COMBO PACK	LHC SERIES	60	120VAC/12VDC	2 30
	LUMACELL	EXPLOSION PROOF- REMOTE EMERGENCY LIGHTING HEADS	MQM HZ SERIES	5	12VDC	1 / 2 30

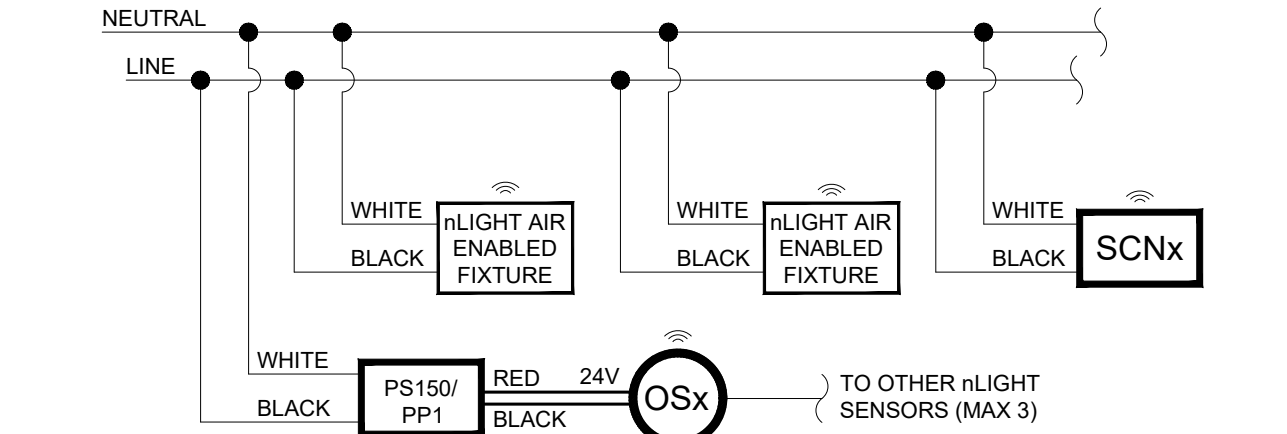
- GENERAL NOTES (APPLICABLE TO ALL DRAWINGS):
- PROVIDE LIGHTING CONTROLS IN ALL AREAS TO MEET ASHRAE & SB10 REQUIREMENTS.
 - COORDINATE THE LIGHT FIXTURE LOCATIONS AND CONTROLS WITH HVAC SYSTEM DUCT-WORK.
 - EXIT SIGNS FED BY A DEDICATED 15A 120V 1PH CCT.
 - BATTERY UNIT C/W VSR (VOLTAGE SENSING RELAY) TO TURN ON UPON NORMAL POWER FAILURE.
 - EXTERIOR LIGHTING CONTROLLED BY TIMER AND PHOTOCELL C/W A BY-PASS SWITCH FOR MAINTENANCE.
 - PROVIDE WIRING/CONNECTION FOR EMERGENCY LIGHTING SUCH THAT THE EMERGENCY LIGHTING SHALL BE AUTOMATICALLY ACTIVATED UPON POWER FAILURE TO THE CORRESPONDING NORMAL LOCAL LIGHT CIRCUIT.
 - PROVIDE ALL NECESSARY LIGHTING ACCESSORIES, POWER PACKS, EMERGENCY LIGHTING RELAY MODULES AND HARDWARE TO MAKE A COMPLETE LIGHTING SYSTEM AS ILLUSTRATED ON DRAWINGS.
 - ENSURE EXIT LIGHTS ARE VISIBLE BELOW ALL PIPING AND OBSTRUCTIONS.
 - COORDINATE ROUTING OF CONDUITS IN THE FIELD WITH OTHER TRADES TO SUIT SITE CONDITIONS.
 - COORDINATE FINAL FIXTURE LOCATIONS WITH MECHANICAL ELEMENTS ON SITE AND MAINTAIN CLEARANCES TO SUIT. ENSURE ADEQUATE LIGHTING PERFORMANCE THROUGHOUT.
- DRAWING NOTES (INDICATED WITH HEXAGONS):
1. PROVIDE COMPLETE INSTALLATION AND EQUIPMENT TO HAZARDOUS CLASSIFICATION ZONE 22.
 2. PROVIDE COMPLETE INSTALLATION AND EQUIPMENT TO HAZARDOUS CLASSIFICATION ZONE 1 & 21.

LIGHTING CONTROL LEGEND		
SYMBOL	DESCRIPTION	MODEL #
	WIRELESS ON/OFF DIGITAL SWITCH	nLIGHT: rPODLA
	WIRELESS DIGITAL SCENE SWITCH W/ DIMMING	nLIGHT: rPODLA DX
	WIRELESS 2 PRESET SCENE SWITCH W/ ON/OFF AND DIMMING	nLIGHT: rPODLA 2S DX
	DUAL-TECH, OCCUPANCY SENSOR SWITCH	SENSORSWITCH: WSXA PDT
	WIRELESS DUAL TECH (MICROPHONIC & PIR), CEILING MOUNTED, SMALL MOTION	nLIGHT: rCMS PDT 9
	WIRELESS DUAL TECH (MICROPHONIC & PIR), CEILING MOUNTED, LARGE MOTION	nLIGHT: rCMS PDT 10
	WIRELESS POWER PACK W/ DIMMING (FOR USE WITH NON-NLIGHT ENABLED FIXTURES)	nLIGHT: rPP20 D 24V EFP
	STANDARD POWER SUPPLY: 150mA	nLIGHT: PS 150
NOTES: • REFER TO MANUFACTURER INFORMATION FOR EXACT INSTALLATION REQUIREMENTS • PROVIDE ADDITIONAL POWER PACKS AND POWER SUPPLY (PS150) AS REQUIRED FOR A FULLY OPERATIONAL SYSTEM. COORDINATE EXACT QUANTITY WITH MANUFACTURER.		



FLOOR PLAN - LIGHTING

SCALE: 1:75



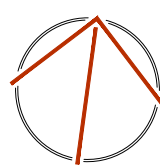
DETAIL #1- nLIGHT AIR WIRING SCHEMATIC
SCALE: NTS

KEYPLAN

REVISIONS

NO.	ISSUED FOR	DATE
00	PRELIMINARY COSTING	FEB 13 2025
...
04	COORDINATION	JAN 19 2026
05	PERMIT/ TENDER	JAN 30 2026
06	ASR-03	FEB 11 2026
07	RFP	MAR 25 2026
08	ADDENDUM ME-01	APR 21 2026

NORTH



DESIGN	NW/ KM	DRAWN	MA
CHECKED	ZU/ SGH	REVIEWED	ZU/ SGH

PROJECT

HFI QUALITY AND INNOVATION LAB

ADDRESS

3322 HANDS ROAD, R.R. #4,
PRESCOTT, ON K0E 1T0

PROJECT NO.

CE-6074

DRAWING TITLE

FLOOR PLAN - LIGHTING

DRAWING NUMBER

E3 OF 9